



INVEST IN KOVIN





Municipality of Kovin:

The municipality of Kovin is the southmost part of Banat and covers 730 km². It belongs to the South Banat District and is the eighth largest municipality in the Autonomous Province of Vojvodina. It borders the municipalities of Pancevo to the west, Alibunar and Vrsac to the north, and Bela Crkva to the east. The south boundary of the municipality is the Danube River in the length of 46 km, while its northern territories represent a part of the Deliblato Sands, which spreads over 34,829.32 hectares. 53% of the Deliblato Sands are in the Kovin municipality.

Its population amounts to 33,722 persons of various ethnic backgrounds. The municipality consists of 10 settlements: Kovin, Bavanište, Gaj, Dubovac, Deliblato, Mramorak, Skorenovac, Pločica, Malo Bavanište and Šumarak. Kovin is the administrative, cultural, political and economic center of the municipality and it has 13,499 inhabitants.

Agriculture provides a high potential for municipal economic growth due to 42.5 thousand hectares of high quality arable land. The municipality also has significant coal, gravel and peat deposits.



Road infrastructure:

The municipality of Kovin has a favorable geographical and transport-wise position. In the immediate vicinity of Kovin municipality there are several cities with developed economic and social life: Belgrade (50 km), Pančevo (34 km) and Smederevo (13 km). The transport connectivity with these cities is good.

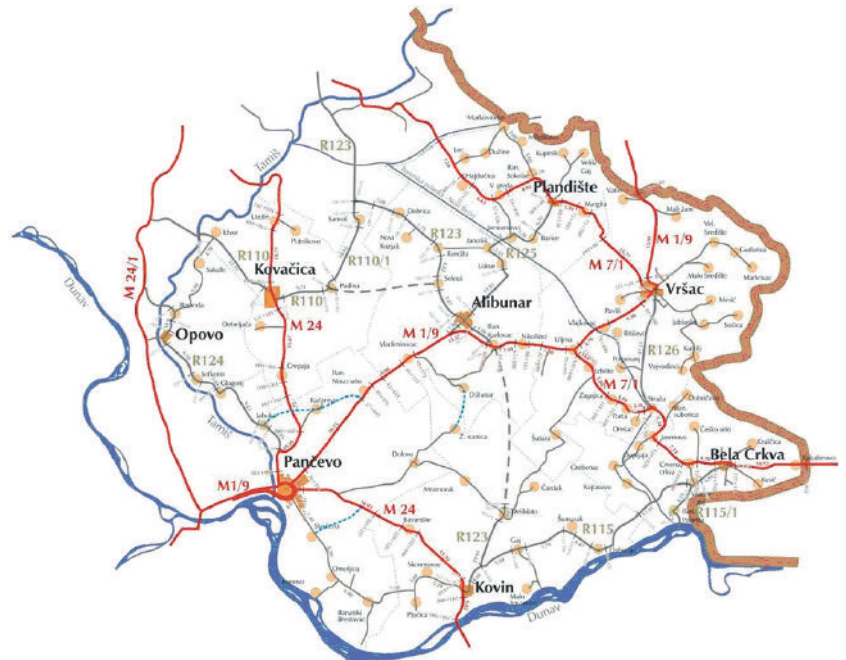
On the territory of Kovin municipality the most significant road networks are:

- **Class I road, trunk road No.24 Pančevo - Kovin - Smederevo (M24)**
- **Class II roads, regional roads no. 123 Alibunar - Deliblato - Kovin and the road No. 115 Kovin - Bela Crkva.**

"Dunavac", a 1.5 km long distributary of the Danube that runs along the Kovin industrial zone, is used as port and winter shelter for vessels, but it's only partly designed for these purposes.

Distance from big urban centres, motorways and border crossings

- Belgrade 50 km
- Pančevo 34 km
- Smederevo 13 km
- Motorway E 70 and E 75 25 km
- Belgrade Airport 70 km
- Border crossing Kaludjerovo, Romania 56 km
- Timisoara, Romania 149 km
- Niš 196 km
- Sofia, Bulgaria 356 km
- Skopje, North Macedonia 396 km
- Budapest, Hungary 422 km
- Vienna, Austria 660 km



Top 10 employers in the Kovin municipality

Company	Sector	Country	Workers
WEST PHARMACEUTICAL	Chemical industry (rubber)	USA	305
DELTA DANUBE	Food industry	Indonesia	252
UTVA SILOSI	Metallurgy	Serbia	210
STATIK	Construction industry	Serbia	105
ZLATAR MRAMORAK	Agriculture	Serbia	80
PREMIL	Food industry (pet food)	Serbia	75
HEMOFARM	Pharmaceutical industry	Serbia	70
ALPIS	Food industry (alcohol production)	Serbia	63
SWAN LAKE	Food industry (fish packing)	Serbia	59
NOVA PEŠČARA	Agriculture	Serbia	57

5 TOP SECTORS

1. Pharmaceutical industry
2. Agriculture
3. Construction industry
4. Mining
5. Metal industry

Employment statistics

Number of employed persons in 2018: **6411**

Number of unemployed persons June 2019: **2285**

Structure of unemployed by age (National Employment Service, June 2019)

15-29	30-49	50-65
565	977	743
25 %	43 %	33 %

Year	Total	Structure of unemployed by education level						
		I	II	III	IV	V	VI	VII
2019	2285	991	141	400	600	8	74	71

Schools

There are 10 **elementary schools** in the municipality of Kovin, 3 in Kovin and 7 in other settlements. Total number of children in these schools at the beginning of school year 2018/2019 was 2,343.



Secondary schools in Kovin:

Grammar School and School of Economics „Branko Radičević“ Kovin

Program type	Number of 1st grade students	Number of 2nd grade students	Number of 3rd grade students	Number of 4th grade students	Total number of students
General	32	26	29	27	114
Economic technician	28	20	26	23	97
Business administrator	-	14	16	15	45
Total:	60	60	71	65	256

Secondary vocational school „Vasa Pelagić“ Kovin

Educational profile	Number of 1st grade students	Number of 2nd grade students	Number of 3rd grade students	Number of 4th grade students	Total number of students
Agricultural technician	/	/	15	/	15
Operator-mechanic of agricultural machinery	30	15	13	/	58
Florist - gardener	24	/	/	/	24
Horticulture technician	/	/	/	13	13
Turism-hotel technician	28	24	/	21	73
Cook	11	22	11	/	44
Waiter	15	/	9	/	24
Confectioner	/	16	/	/	16
Total:	108	77	48	34	267

Agriculture

The most important economic resource in Kovin municipality is agricultural land with high production value.

The total area of arable agricultural land in the municipality of Kovin is 42,500 ha:

- privately owned around 37.000,00 ha
- state-owned around 5.500,00 ha

Structure of agricultural production:

- Corn 24.460 ha
- Sunflower 5.960 ha
- Soy 5.770 ha
- Wheat 3.880 ha
- Medicinal and aromatic herbs 650 ha
- Tobacco 320 ha
- Forage plants 280 ha
- Vegetables 150 ha
- Fruit 96,2 ha
- Sugar beet 150 ha
- Barley 290 ha
- Oilseed rape 350 ha
- Other 390 ha

The area of 1,138.44 ha is under meadows and pastures.

Growing of medicinal and aromatic herbs has a long tradition in the municipality of Kovin. Mint is predominantly cultivated (on about 200 ha), followed by chamomile, lemon balm, marsh-mallow, parsley, dill and many others.



Drainage and irrigation

The drainage and irrigation system covers 40,945 ha. The length of channel network is 703 km. Irrigation can be performed from the open channel network.

Stock farming

Large area under arable land provides the opportunity for development of stock farming. According to data from the Veterinary Register of animals on family farms, there are:

- 5,376 cattle,
- 9,947 sheep and goats,
- 17,479 pigs,
- 103,833 poultry and birds and
- 52 horses and donkeys.

85 beekeepers are engaged in beekeeping in the territory of Kovin municipality, with a total of 5,618 hives. An annual production of 85 to 110 tonnes of honey can be expected.

Deliblato Sands and Recreation Center Chardak



One of the biggest tourist attractions in the Kovin municipality is the Deliblato Sands, also known as the "European Sahara". Due to its dune relief, specific microclimate, great richness of flora and fauna, as well as air, which has been proven to be extremely beneficial, it offers exceptional opportunities for the development of sport-recreational, hunting and eco tourism, excursions and manifestation. The Sports and Recreation Center Chardak has two pavilions, Nera and Brzava. Its accommodation capacities consist of 130 beds intended primarily for children and athletes (during training). Chardak also has a restaurant with a capacity of up to 400 guests, sports fields and walking trails. Its distance from Belgrade is 70 km.

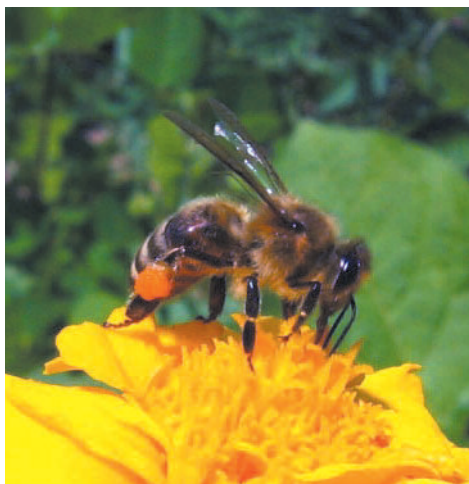


In addition to the settlement of Chardak, the Deliblato Sands offers the possibility for construction of golf courses. As golf is a sport, industry, tourism, but above all a lifestyle, organised golfing events would be an addition to the list of tourist attractions that could boost economic, social and environmental development.

Honey from the Deliblato Sands

Honey from the Deliblato Sands is one of the brands which makes this region stand out among others. The beekeepers from Kovin keep their bees in the Deliblato Sands, which grants them a guaranteed quality of honey coming solely from a unique mixture of flowers and herbs. Due to the high concentration of nutrients, honey is used as a food and for medicinal purposes.

Regional Development Agency South Banat from Pancevo, in cooperation with the Kovin Municipal Administration and South Banat beekeepers associations, has recently registered geographical indication "Deliblato honey" for flower honey.



Kovin Town Fortress

The remains of the Kovin Town fortress testify to the historical, cultural and strategic importance of the settlement on the left bank of the Danube. In 1995 the monument was proclaimed a cultural property of great importance in Serbia.

The medieval town of Kovin was built on the left bank of the Danube, on a manmade hill that dominates the wider area. Kovin was then of great importance for the defense of the southern border of the Hungarian state. The fortress existed until its demolition by the provision of the Belgrade Treaty of 1739. The layout of the fortress' base in its earliest days is preserved in the 18th-century drawing by Marseille. It consisted of two parts separated by a moat. The southern part, which is now almost completely destroyed, had the foundation of irregular triangular shape, while the northern part of the fortress is of rectangular shape that has dimensions 130x150m.

The medieval town of Kovin was a unique construction with a special ambient properties, and also the backbone of the historical development of the town. Based on literature, earthworks and minor archaeological excavations it has been revealed that the site is multi-layered settlement with cultural strata from the Neolithic to the late Middle Ages and Austro-Hungarian rule. In 1967, a unique model of the Danube stretch was built on the site, from the mouth of the Tisza River to the Djerdap Dam, 146 meters long.



The model of the Danube course



In the area of the Old Kovin Town, a concrete model of the Danube course was built, from the mouth of the Tisza to the Djerdap hydropower plant, 146 meters long, with a realistic representation of the depth, width, all the aits, tributaries, inlets, branches and places through which the river passes. The model is an ideal assistance tool for boaters who can see how in reality the river meanders, where the embankments are, what the conditions for navigation are, etc. The other visitors can get better idea about the power, size and richness of the second largest European river.

This area has cultural significance, but it is also important for tourism of the Kovin municipality and of the whole South Banat. In order to preserve, present and promote the cultural heritage, as well as to educate young people about the importance and care of the cultural heritage, the Municipality of Kovin reconditioned the model in 2019.



Dunavac distributary



Dunavac represents an ideal natural port for access by boats and small nautical vessels. It is about 1500 meters away from the open Danube stream and very suitable for sheltering in bad weather conditions. The marina features three modern pontoons and the capacity is sufficient for accommodation and berthing of 101 fishing boats and smaller nautical vessels. The ideal location, excellent natural conditions and capacity of the Danube River (46 km of length in Kovin municipality) are the main resources for the future development of tourism in this region.



Šljunkara

Just 2.5 kilometers from Kovin, tucked away in a beautiful forest area, the favorite local resort is located - the main swimming attraction in the area during summer. It was formed after the exploitation of gravel when the basin was filled with water. The lake is supplied exclusively by the Danubian groundwater which is filtered through layers of gravel and the water level of the lake depends on the water level of the river. Its water temperature is 3-40 C higher and in summer reaches 23-280 C. The maximum measured depth of the lake is 21 meters, and it is characterized by very clear, transparent water and a pebble beach. Extremely rich in fish, it is a paradise for fishermen from across Serbia, while the grassy areas around the lake are attracting campers who spend their summer vacation on Šljunkara.



During 2018, the local access road was reconstructed, two sport courts (for basketball and volleyball) were built, park furniture was replaced, and children's playground equipment was installed. Many manifestations, important for our municipality, have been organised here: "Hook against drugs" for children and youth, "Golden caldron of Kovin" - a competition in cooking fish soup, an auto event organised by the "Margum" auto club and others.

Swimming pool

At the locality of "Šljunkara", the construction of an indoor public swimming pool began at the end of 2018. All available capacities will be at disposal for sport, leisure and recreation purposes to athletes, domestic and foreign tourists and all citizens of our municipality throughout the year.



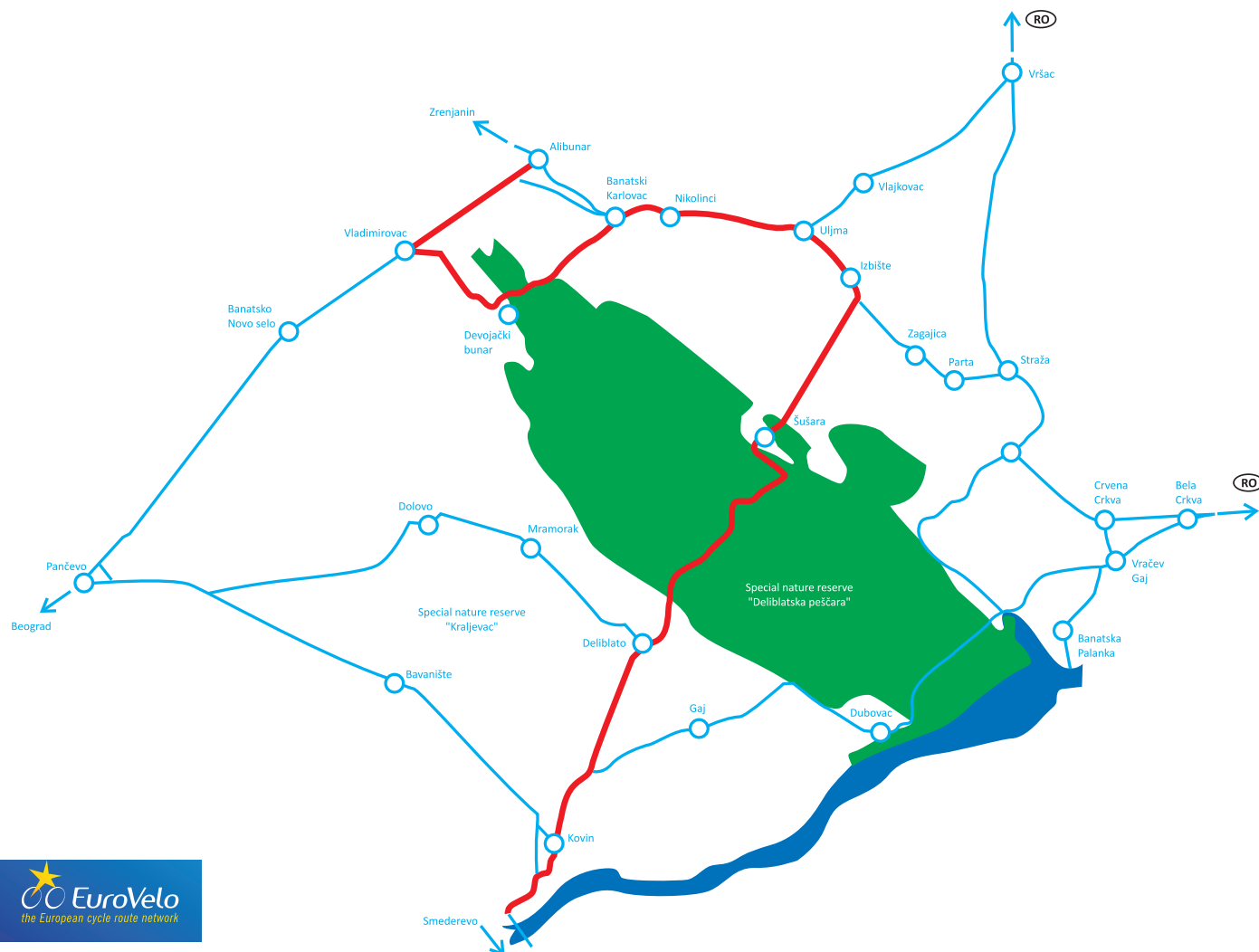
The special nature reserve "Kraljevac"

The special nature reserve "Kraljevac" is located in the settlement of Deliblato, less than 60 km far from Belgrade. It is an area of unique beauty and intact nature. It includes the lake Kraljevac - with its permanent and floating islands, which due to the impact of wind and water currents completely change the surrounding landscape; also, the pasture of Spasovina and the valley of the Obzovik spring. The area is ideal for various activities such as sport fishing, hiking and exploring the reserve in company of a professional guide, boating, bird watching and photo safari, with the possibility of organizing eco workshops.



Cycle route

Eurovelo 6 is a 3653 km long cycle route linking the Atlantic and the Black Sea. It runs through Kovin along the whole course of the Danube, that is, 46 km long embankment. It is an ideal tour for getting to know the natural attractions in the municipality, bird watching, bathing tourism and combinations thereof, including a visit to the cultural sights in Kovin municipality.



Block 119

Industrial zone-Block 119 is located south of the center of Kovin settlement, in the direction towards the Danube river and Smederevo.

Construction of: business, production and storage facilities, as well as construction of: business-production facility, business-warehouse, production-warehouse or business-production-warehouse facility is permitted. The maximum allowed degree of exploitation of a building plot is 70%. The allowed floor level of the facility is: business - max. G + 2 (ground floor + two floors), exceptionally higher; production - max. G + 1 (ground floor + one floor), possibly more; warehouse - max. G + 1 (ground floor + one floor); auxiliary - max. G. The maximum permissible index of built-up area on a construction lot in the working zone (with plateos and roads) is 2.1.

Distance from:

- port 5 km
- railway station 10 km
- motorway 15 km
- airport 60 km

Available infrastructure:

- traffic signalisation
- atmospheric sewerage
- water supply network
- sewerage
- telecommunication network
- electric power supply network
- public lighting



Natural gas supply network is not complete, but the listed plots are in the vicinity.

Ownership: Kovin Municipal Administration

Selling price of the plot without facilities is determined by the Tax Administration. ($\approx 5,5$ EUR/m²)

Leasing price of the plot without facilities is determined by the court assessor. ($\approx 4,5$ EUR/are)

Available plots in Block 119:

1) Plot no: 9317/9 - 1 ha 31 a 35 m²

2) Plot no: 9317/10 - 1 ha 28 a 58 m²

3) Plot no: 9317/15 - area 1 ha

4) Plot no: 9317/34 - area 1 ha

5) Plot no: 9317/35 - area 1 ha

6) Plot no: 9317/36 - area 1 ha

7) Plot no: 9317/37 - area 79 a 36 m²



Plot no.: 7059/2 - 4 ha 7 a 21 m²

It is located 2 km northeast of the Kovin settlement centre.

Distance from:

- port 10 km
- railway station 15 km
- motorway 20 km
- airport 60 km

Ownership: Kovin Municipal Administration

Selling price of the plot without facilities is determined by the Tax Administration. ($\approx 5,5$ EUR/m²)

Leasing price of the plot without facilities is determined by the court assessor. ($\approx 4,5$ EUR/are)



Available infrastructure:

- traffic signalisation
- water supply network
- sewerage
- telecommunication network
- electric power supply network
- public lighting



Block 121

It is located west of the center of the Kovin settlement, beside the class I road - trunk road No.24.

Plot occupancy index: 70%

Facility floor level:

- business premises: maximum G + 1 + attic
- production facilities: in accordance with technological requirements
- storage facilities: maximum G + 1
- auxiliary facilities: maximum G

Plot no: 9288/2 - 8 ha 65 a 81 m²

Plot no: 9288/4 - 8 ha 20 a 66 m²

Distance from :

- the port 10 km
- railway station 15 km
- motorway 20 km
- airport 60 km

There is no infrastructure at the plot.

Ownership: Republic of Serbia.





Address:
J.N.A. 5, Kovin
Telephone:
+381 13 742 114

Email:
predsednik@kovin.org.rs
Website:
www.kovin.org.rs